

## HOW TO USE

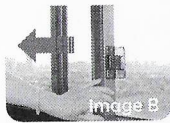


Image B

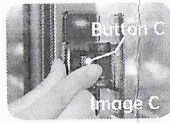
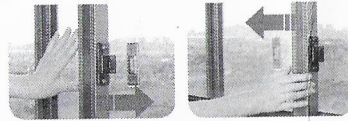


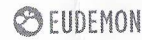
Image C

**To unlock:** Move the window to the closing direction, and then slide button C to get unlocked.



**To lock:** Move the window and it will get locked automatically.

## WARNING



**Choking Hazard - Small Parts.  
Not for children under 3 yrs.**

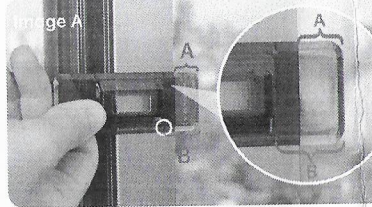
- Please do not use the product for other purpose.
- The product can not substitute for adult and perform supervision on children.
- Please stop using in case of damage to the product.
- Assembly by an adult.



Manufactured by Ningbo Eudemon Child Protective Equipment Co., Ltd.

Add: No.99 Hongxia Road, Xiapu, Beilun District, Ningbo China

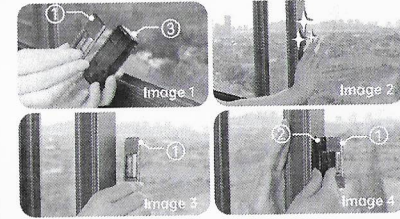
## Judge Before Installation



Open the window to a certain distance, and then measure A and B.

If  $A > B$ , pls start from **step 1**;  
if  $A \leq B$ , pls start from **step 2**.

## Installation



- Step 1:** (Image 1) Stack ① and ③ with the tape.  
**Step 2:** (Image 2) Open the window to a safe distance, clean the part where you need to install.  
**Step 3:** (Image 3) Paste ① parallel to the window frame.  
**Step 4:** (Image 4) Buckle ② into ①, and move the window to paste it.

**TIPS:** 1. Effect will be better after 24 hours.  
2. Install the lock with screws if needed.